

Foreword

This manual introduces the installation, functions and operations of the DH-AC12 device (hereinafter referred to as "the Device"). Read carefully before using the device, and keep the manual safe for future reference.

Safety Instructions

The following signal words might appear in the manual.

Signal Words	Meaning
DANGER	Indicates a high potential hazard which, if not avoided, will result in death or serious injury.
WARNING	Indicates a medium or low potential hazard which, if not avoided, could result in slight or moderate injury.
CAUTION	Indicates a potential risk which, if not avoided, could result in property damage, data loss, reductions in performance, or unpredictable results.
TIPS	Provides methods to help you solve a problem or save time.
NOTE	Provides additional information as a supplement to the text.

About the Manual

- The manual is for reference only. Slight differences might be found between the manual and the product.
- We are not liable for losses incurred due to operating the product in ways that are not in compliance with the manual.
- The manual will be updated according to the latest laws and regulations of related jurisdictions. For detailed information, see the paper user's manual, use our CD-ROM, scan the QR code or visit our official website. The manual is for reference only. Slight differences might be found between the electronic version and the paper version.
- There might be errors in the print or deviations in the description of the functions, operations and technical data. If there is any doubt or dispute, we reserve the right of final explanation.
- Upgrade the reader software or try other mainstream reader software if the manual (in PDF format) cannot be opened.

Important Safeguards and Warnings

This section introduces content covering the proper handling of the device, hazard prevention, and prevention of property damage. Read carefully before using the device, and comply with the guidelines when using it.



- Transport the device under allowed humidity and temperature conditions. Refer to the technical parameters for requirements on the transporting temperature and humidity of the device.

Storage Requirements



- Store the device under allowed humidity and temperature conditions. Refer to the technical parameters for requirements on the storing temperature and humidity of the device.

Installation Requirements



- Do not connect the power adapter to the device while the adapter is powered on.
- Strictly comply with the local electrical safety code and standards. Make sure the ambient voltage is stable and meets the power supply requirements of the device.
- Personnel working at heights must take all necessary measures to ensure personal safety including wearing a helmet and safety belts.
- Do not leave outdoor models of the device hanging in the air or facing outwards when installing onto poles that are on top of buildings.



- Do not place the device in a place exposed to sunlight or near heat sources.
- Put the device in a well-ventilated place, and do not block its ventilation.
- Use an adapter or cabinet power supply provided by the manufacturer.

- Do not connect the device to two or more kinds of power supplies, to avoid damage to the device.
- The device is a class I electrical appliance. Make sure that the power supply of the device is connected to a power socket with protective earthing.
- To ensure heat dissipation, the gap between the device and the surrounding area should not be less than 10 cm on the sides and 10 cm on top of the device.
- When installing the device, make sure that the power plug and appliance coupler can be easily reached to cut off power.
- Voltage stabilizer and lightning surge protector are optional depending on the actual power supply on site and the ambient environment.

Operation Requirements



- Do not disassemble the device without professional instruction.
- Operate the device within the rated range of power input and output.
- Make sure that the power supply is correct before use.
- Make sure the device is powered off before disassembling wires to avoid personal injury.
- Do not unplug the power cord on the side of the device while the adapter is powered on.



- Use the device under allowed humidity and temperature conditions.
- Operating temperature: 0°C–40 °C (32 °F–104 °F)ns.
- Do not drop or splash liquid onto the device, and make sure that there is no object filled with liquid on the device to prevent liquid from flowing into it.
- Do not block the ventilator of the device with objects, such as a newspaper, table cloth or curtain.
- Do not place an open flame on the device, such as a lit candle.

Maintenance Requirements



- Do not disassemble it unless necessary.
- Power off the device before maintenance.
- Mark key components on the maintenance circuit diagram with warning signs.

1 Port and Indicator

Table 1-1 Indicator description

Status	Description
Solid green	Internet access available.
Solid red	Unable to access the Internet. (Router connected, but network disconnected.)
Flashes	<ul style="list-style-type: none"> Flashes quickly (T=240 ms) for 120 s: WPS process. Flashes slowly (T=2 s) for 10 s: Resetting process.

2 Connection Diagram

Figure 2-1 Connection diagram

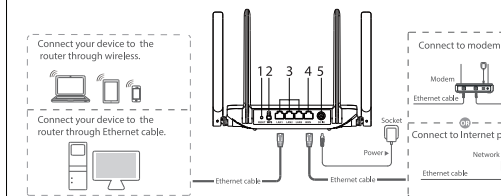


Table 2-1 Rear panel description

Number	Description
1	Reset button. Press and hold the button for more than 5 seconds, and then the router will restore its factory defaults.
2	WPS button. Short press for WPS function.
3	LAN port. Connects to wired devices such as computers and set top boxes.
4	WAN port. Connects to the modem or Ethernet port.
5	Power port. Connects to the power supply.

3 Configuring the Router

You can initialize the device and log in to it through the device webpage and WiLynk app.

3.1 App Configuration

You can initialize the device and log in to the app to configure the device.

NOTE

- For the first time use or after the device is restored to its factory defaults, you need to initialize the device.
- To protect your device, keep the admin login password safe after initialization, and change the password regularly.
- For more details on app configuration, go to Me > User Manual on WiLynk.

3.1.1 Downloading App

Scan the QR code to download the WiLynk app.

Figure 3-1 QR code



NOTE

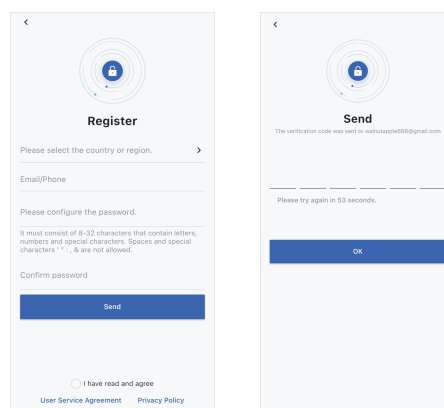
You can also search for WiLynk at the app store, and then download it.

3.1.2 Registering Accounts

Procedure

- Open WiLynk, tap **Register**, and then enter the **Register** page.
- Select the country or region, enter the email address or phone number, enter the password, and then confirm it.
 - Phone number is only supported in select countries.
- Tap the **I have read and agree** checkbox. You can click to view the user service agreement and privacy policy.
- Click **Send**.
- Enter the verification code, and then click **OK**.

Figure 3-2 Registration



3.1.3 Adding Devices

Prerequisites

Make sure that the device is connected with power and modem. After the device is powered on, wait for 2 minutes, and then add devices.

Procedure

Step 1 On the **Status** page, tap **Add Device** or on the right-upper corner.

Figure 3-3 Preparations for adding device

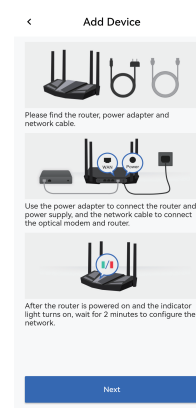
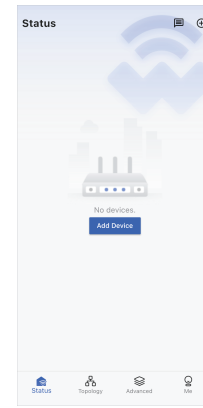


Figure 3-4 Add devices



Step 2 Scan the QR code on the device, or tap **Select Type** of the device, and then enter the SN.

Step 3 Go to the Wi-Fi settings on your system settings, connect the router SSID, and then tap **Next**.

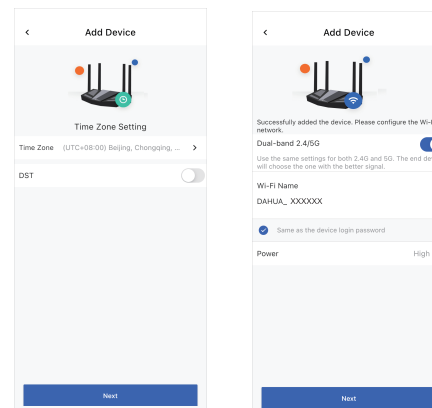
Step 4 Configure the login password of the device, and then tap **Next**.

Step 5 Configure the networking method of the device, and then tap **Next**.

Step 6 Wait until the screen prompts **Connect to Internet**, and then tap **Next**.

Step 7 Configure the time zone and DST of the device, configure the device SSID, and then tap **Next** to finish the configuration.

Figure 3-5 Configure time zone and Wi-Fi network



3.2 Web Configuration

You can initialize the device and log in to it through the device webpage.

Procedure

Step 1 The end device connects to the router through wired and wireless connection. Enter the device domain name (**dahuawifi.com**) or device IP (**default IP 192.168.10.110**) to log in to the device to configure settings.

Step 2 Click **OK**.

Step 3 Select the **I have read and agree to the terms of the Software License Agreement and Privacy Policy** checkbox, and then click **OK**.

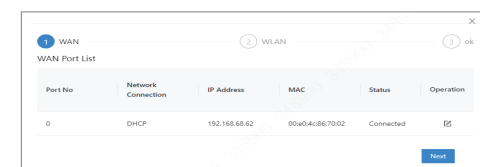
Step 4 For the first-time login, you need to set the login password, and then click **NEXT**.

Step 5 Enter the login password, and then enter the web page.

Step 6 For the first-time login, the device will pop up a setup wizard.

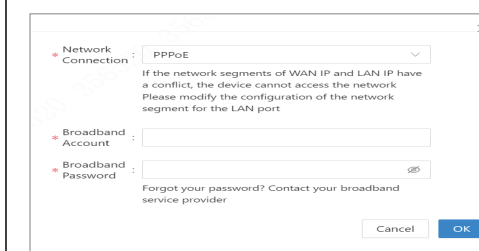
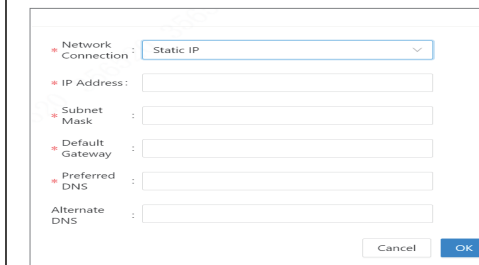
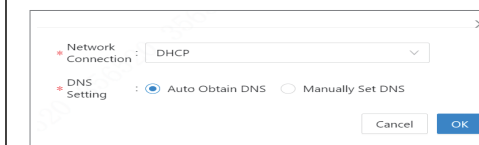
Step 7 **WAN settings:** You can change the networking method (default DHCP), click the icons to change, and then click **Next**.

Figure 3-6 WAN settings



- If you can access Internet without any settings on your bandwidth, select DHCP as the networking method.
- If your bandwidth cannot obtain IP address automatically, contact network administrator or bandwidth service provider, select Static IP as the networking method, and then enter related information as guided.
- If you need to enter the account and password to access Internet, select PPPoE as the networking method, and then enter bandwidth account and bandwidth password.

Figure 3-7 Network settings



Step 8 Enter the **WLAN Setting** page, set Wi-Fi name, password and power, and then click **Save**.

Figure 3-8 WLAN settings

