



# Technical Specifications

## MOBOTIX S74

**Flexible. Modular. Unique.**

Weatherproof and robust, the latest generation of our successful S camera models features increased modularity as well as the latest MOBOTIX 7 system platform with intelligent Plug-In App concept. The result is a system completely unrivaled in terms of performance, functionality and design.

- Platform with the most flexible codec support: H.264, H.265, MxPEG+ and MJPEG
- ONVIF Profile G, S, T conformity guarantees utmost interoperability
- Increased modularity with flexible usage of a combination of up to three sensor or functional modules
- 2 x 4K UHD resolution
- Wide Dynamic Range (WDR) with up to 120 dB



## Technical Specifications

### MOBOTIX S74

---

- Easy Plug quick-mounting system
- Robust in any environment: -40 to 65 °C/-40 to 149 °F, IP66, and IK10

# Technical Specifications

<b>Hardware</b> .....	<b>3</b>
<b>Image Formats, Frame Rates, Image Storage</b> .....	<b>5</b>
<b>General Features</b> .....	<b>7</b>
<b>Video Analysis</b> .....	<b>8</b>
<b>Video Management Software</b> .....	<b>9</b>
<b>Sensor Modules</b> .....	<b>9</b>
Dimensions of Sensor Modules .....	9
Weight Sensor Modules .....	9
Supported Sensor Modules .....	10
Supported Thermal Sensor Modules .....	11
Features Thermal Image Sensors .....	12
Features ECO Thermal Image Sensor .....	13
<b>Functional Modules</b> .....	<b>14</b>
<b>Interface Slide in Boards</b> .....	<b>15</b>
S74 Network Slide in Board with RJ45 socket .....	15
S74 Network Slide in Board with LSA terminal .....	15
S74 Network Slide in Board with RJ45 and VDC power supply .....	15
<b>Dimensions</b> .....	<b>16</b>

## Hardware

Feature	Properties
Image sensor (color or B&W sensor)	up to 4K UHD 3840x2160, 16:9, 1/1,8"
Light sensitivity	<ul style="list-style-type: none"> <li>▪ Color sensor (day): 0,1 lx @ 1/60s; 0,005 lx @ 1s</li> <li>▪ BW sensor (night): 0,02 lx @ 1/60s; 0,001 lx @ 1s</li> </ul>

## Technical Specifications

### MOBOTIX S74

---

Feature	Properties
Exposure control	Manual and automatic mode 1 s to 1/16,000 s
IK protection class	IK10 (housing)
IP protection class	IP66
Operating temperature range	-40 to 65 °C/-40 to 149 °F
Min. cold start temperature	-30 °C/-22 °F
Relative Humidity	95 % non-condensing
Internal DVR, out of the box	MicroSD card (8 GB), MxPEG+ recording only
I/Os	<a href="#">Hardware, p. 3</a> required
Microphone/Speaker	<a href="#">Hardware, p. 3</a> required
Passive infra-red sensor (PIR)	Available with functional module, max. 4.5 Watt (see <a href="#">Hardware, p. 3</a> )
Infra-red illumination	Three functional modules for wide-angle, standard, and tele lenses
Range of infra-red illumination	Up to 30 m/100 ft (may be more depending on scene)
Max. power consumption	max. 25 W
Electrical surge protection	<a href="#">Hardware, p. 3</a> required
PoE standard	PoE Plus (802.3at-2009)/Class 4 (Network slide in Board required. See <a href="#">Hardware, p. 3</a> or <a href="#">Hardware, p. 3</a> )
Interfaces	4 sensor / functional modules USB-C 2 Slots for slide in boards (Network, IOs etc.)
Mounting Options	Wall-mountable
Dimensions (height x width x depth)	36 x 232 x 110 mm
Weight without sensor modules	1.130g
Housing	Aluminum, PBT-30GF

---

Feature	Properties
Standard accessories	<ul style="list-style-type: none"> <li>1 SD card 8 GB (installed)</li> <li>1 Important Safety Information</li> <li>1 Sticker with EAN number of camera</li> <li>1 Sticker with IP address of camera</li> <li>1 Module wrench (gray)</li> <li>1 Lens wrench blue</li> <li>4 Wood screws 4.5 x 60 mm</li> <li>4 Dowels S8</li> <li>2 Covers for screw plastic white</li> </ul>
Detailed technical documentation	<a href="http://www.mobotix.com">www.mobotix.com</a> > <a href="#">Support</a> > <a href="#">Download Center</a> > <a href="#">Marketing &amp; Documentation</a>
MTBF	80,000 hours
Certificates	EN 50121-4, EN 55032, EN 55035, EN 61000-6-1, EN 61000-6-2, EN 61000-6-3, EN 61000-6-4, EN 62368-1, EN 63000, AS/NZS CISPR32, 47 CFR Part 15b
Protocols	DHCP (client and server), DNS, ICMP, IGMP v3, IPv4, IPv6, HTTP, HTTPS, FTP, FTPS, NFS, NTP (client and server), RTP, RTCP, RTSP, SFTP, SIP (client and server), SMB/CIFS, SNMP, SMTP, SSL/TLS 1.3, TCP, UDP, VLAN, VPN, Zero-conf/mDNS
Manufacturer warranty	5 years

## Image Formats, Frame Rates, Image Storage

Feature	Properties
Available video codecs	<ul style="list-style-type: none"> <li>▪ H.264, H.265</li> <li>▪ MxPEG+</li> <li>▪ MJPEG</li> </ul>
Image resolutions	VGA 640x360, XGA 1024x576, HD 1280x720, FullHD 1920x1080, QHD 2560x1440, 4K UHD 3840x2160

## Technical Specifications

### MOBOTIX S74

---

Feature	Properties
Multi streaming	H.264, H.265 with triple streaming
Multicast stream via RTSP	Yes
Max. image H.264 resolution	<ul style="list-style-type: none"><li>■ One sensor: 4K UHD, 3840x2160 (8MP)</li><li>■ Both sensors (dual image): 2x 4K UHD, 7680x2160 (16MP)</li></ul>
Max. frame rate	MxPEG: 20@4K, H.264: 30@4K, H.265: 30@4K

---

# General Features

Feature	Properties
WDR	Up to 120 dB
Software features	<ul style="list-style-type: none"> <li data-bbox="572 544 962 568">▪ H.264, H.265 Multistreaming</li> <li data-bbox="572 627 932 651">▪ Multicast stream via RTSP</li> <li data-bbox="572 710 1150 734">▪ Digital pan, tilt, zoom/vPTZ (up to 8x zoom)</li> <li data-bbox="572 792 968 817">▪ Genetec protocol integration</li> <li data-bbox="572 875 906 900">▪ Custom exposure zones</li> <li data-bbox="572 958 1161 983">▪ Snapshot recording (pre/post-alarm images)</li> <li data-bbox="572 1041 879 1066">▪ Continuous recording</li> <li data-bbox="572 1124 807 1149">▪ Event recording</li> <li data-bbox="572 1207 1050 1232">▪ Time-controlled flexible event logic</li> <li data-bbox="572 1290 1161 1314">▪ Weekly schedules for recordings and actions</li> <li data-bbox="572 1373 1225 1397">▪ Event video and image transfer via FTP and email</li> <li data-bbox="572 1456 1118 1480">▪ Playback and QuadView via web browser</li> <li data-bbox="572 1538 975 1563">▪ Animated logos on the image</li> <li data-bbox="572 1621 935 1646">▪ Master/Slave functionality</li> <li data-bbox="572 1704 911 1729">▪ Privacy zone scheduling</li> <li data-bbox="572 1787 1177 1812">▪ Remote alarm notification (network message)</li> <li data-bbox="572 1870 1038 1895">▪ Programming interface (HTTP-API)</li> <li data-bbox="572 1953 930 1977">▪ MOBOTIX MessageSystem</li> </ul>

## Technical Specifications

### MOBOTIX S74

---

Feature	Properties
ONVIF compatibility	Profile G, S, T
Master/Slave functionality	Yes
Remote alarm notification	email, network message (HTTP/HTTPS), SNMP, MxMessageSystem
DVR / image storage management	<ul style="list-style-type: none"><li>▪ MxPEG+ only</li><li>▪ Internal microSD card (SDHC/SDXC), 8 GB out of the box</li><li>▪ On external USB and NAS devices,</li><li>▪ Different streams for live image and recording</li><li>▪ MxFFS with buffered archive, pre- and post-alarm images, storage monitoring with error reporting</li></ul>
Camera and data security	User and group management , SSL connections, IP-based access control, IEEE 802.1X, intrusion detection, digital image signature

## Video Analysis

Feature	Properties
Video motion detection	Yes
MxActivitySensor	Version 1.0, 2.1 and object-based MxAnalytics AI
ONVIF compatibility	Profile S, T
MxAnalytics	Heatmap, people counting & object-based counting
MOBOTIX App support	Yes

---



## Video Management Software

Feature	Properties
MOBOTIX HUB	Yes <a href="http://www.mobotix.com">www.mobotix.com</a> > Support > Download Center > Software Downloads
MxManagementCenter	Yes (MxMC 2.2 and higher) <a href="http://www.mobotix.com">www.mobotix.com</a> > Support > Download Center > Software Downloads
MOBOTIX LIVE App	Yes Available in Android and iOS App Stores.

## Sensor Modules

### Dimensions of Sensor Modules

Dimensions (height x width)	58 x 42,5 (50 mm)
--------------------------------	-------------------

### Weight Sensor Modules

Sensor Module	Weight
Standard Sensor Modules	max. 150g
Functional Modules	max. 150g
Thermal Sensor Module	380g
PTMount Thermal	890g

## Supported Sensor Modules

Sensor Module	Order Code
Sensor module with standard 45° lens	Mx-O-M7SA-8DN100
	Mx-O-M7SA-8D100
	Mx-O-M7SA-8N100
	Mx-O-M7SA-4DN100
Sensor module with tele lens 30°	Mx-O-M7SA-8DN150
	Mx-O-M7SA-8D150
	Mx-O-M7SA-8N150
	Mx-O-M7SA-4DN150
Sensor module with tele lens 15°	Mx-O-M7SA-8DN280
	Mx-O-M7SA-8D280
	Mx-O-M7SA-8N280
	Mx-O-M7SA-4DN280
Sensor module with wide angle lens 60°	Mx-O-M7SA-8DN080
	Mx-O-M7SA-8D080
	Mx-O-M7SA-8N080
	Mx-O-M7SA-4DN080
Sensor module with super wide angle lens 95°	Mx-O-M7SA-8DN050
	Mx-O-M7SA-8D050
	Mx-O-M7SA-8N050
	Mx-O-M7SA-4DN050
Sensor module with ultra wide angle lens 120° 4K	Mx-O-M7SA-8DN040
	Mx-O-M7SA-8D040
	Mx-O-M7SA-8N040
	Mx-O-M7SA-4DN040

---

For a complete list of lenses for MOBOTIX cameras, please see the Lens Table document for MOBOTIX 7 models on [www.mobotix.com](http://www.mobotix.com) > [Support](#) > [Download Center](#) > [Marketing & Documentation](#) > [Lens Table](#).

## Supported Thermal Sensor Modules

Sensor module	Order code
CIF Thermal 45° x 35°	MX-O-M7SB-336TS100
CIF Thermal 25° x 19°	Mx-O-M7SB-336TS150
CIF Thermal 17° x 13°	Mx-O-M7SB-336TS280
CIF Thermal Radiometry 45° x 35°	Mx-O-M7SB-336RS100
CIF Thermal Radiometry 25° x 19°,	Mx-O-M7SB-336RS150
CIF Thermal Radiometry 17° x 13°	Mx-O-M7SB-336RS280
CIF Thermal Radiometry 9,3° x 7,1°	Mx-O-M7SB-336RS500 (BTO)
ECO CIF Thermal 105°x75°	Mx-O-M7SA-320T040
ECO CIF Thermal 56°x42°	Mx-O-M7SA-320T080
VGA Thermal 90° x 69°	Mx-O-M7SB-640TS050
VGA Thermal 69° x 56°	Mx-O-M7SB-640TS080
VGA Thermal 45° x 37°	Mx-O-M7SB-640TS100
VGA Thermal 32° x 26°	Mx-O-M7SB-640TS150
VGA Thermal Radiometry 90° x 69°	Mx-O-M7SB-640RS050
VGA Thermal Radiometry 69° x 56°	Mx-O-M7SB-640RS080
VGA Thermal Radiometry 45° x 37°	Mx-O-M7SB-640RS100
VGA Thermal Radiometry 32° x 26°	Mx-O-M7SB-640RS150
VGA Thermal Radiometry 18° x 14°	Mx-O-M7SB-640RS280 (BTO)

The **Thermal Radiometry (TR)** variants automatically alarm when the temperature exceeds or falls below defined limits. This is crucial for the detection of fire or heat sources. Up to 20 different temperature events

## Technical Specifications

### MOBOTIX S74

can be configured simultaneously in so-called TR windows or over the complete sensor image over a temperature range of  $-40$  to  $550$  °C/ $-40$  to  $1022$  °F .

The **Thermal (non-TR)** variants only measure in the center of the image (Thermal spot, 2x2 pixel).

## Features Thermal Image Sensors

Feature	Properties																				
Thermal sensitivity	Typ. 50 mK, IR range 7.5 to 13.5 $\mu\text{m}$																				
Temperature measurement range	$-40$ to $550$ °C/ $-40$ to $1022$ °F																				
Thermal image sensor	Uncooled microbolometer, CIF: 336 x 256 pixels / VGA: 640 x 480																				
Dimensions	PT mount Thermal 336/640: 98.5mm x 106mm diam, 620g (including PT Mount) Sensor module alone: 73mm (+4.4mm front glass) x 57mm diam (63mm front glass), 310g																				
Max. image size	Can be scaled up to 3072 x 2048 (6MP), automatically scaled to size of MX sensor module																				
Max. frame rate	9fps (-FAST version 25/30fps on request)																				
Pixel pitch	17 $\mu\text{m}$																				
Field of view	<table><thead><tr><th>Sensor Module</th><th>FoV</th></tr></thead><tbody><tr><td>336 xx 100</td><td>45° x 35°; 2.27mr, focal 7.5mm, f/1.25</td></tr><tr><td>336 xx 150</td><td>25° x 19°; 1.31mr, focal 13mm, f/1.25</td></tr><tr><td>336 xx 280</td><td>17° x 13°; 0.90mr, focal 19mm, f/1.25</td></tr><tr><td>336 xx 500</td><td>9° x 7°; 0.486mr, focal length 35mm, f/1.5</td></tr><tr><td>640 xx 050</td><td>90° x 69°; 2.27mr, focal 7.5mm, f/1.4</td></tr><tr><td>640 xx 080</td><td>69° x 56°; 1.89mr, focal 9mm, f/1.4</td></tr><tr><td>640 xx 100</td><td>45° x 37°; 1.31mr, focal 13mm, f/1.25</td></tr><tr><td>640 xx 150</td><td>32° x 26°; 0.90mr, focal 19mm, f/1.25</td></tr><tr><td>640 xx 280</td><td>18°x14°; 0.486mr, focal length 35mm, f/1.5</td></tr></tbody></table>	Sensor Module	FoV	336 xx 100	45° x 35°; 2.27mr, focal 7.5mm, f/1.25	336 xx 150	25° x 19°; 1.31mr, focal 13mm, f/1.25	336 xx 280	17° x 13°; 0.90mr, focal 19mm, f/1.25	336 xx 500	9° x 7°; 0.486mr, focal length 35mm, f/1.5	640 xx 050	90° x 69°; 2.27mr, focal 7.5mm, f/1.4	640 xx 080	69° x 56°; 1.89mr, focal 9mm, f/1.4	640 xx 100	45° x 37°; 1.31mr, focal 13mm, f/1.25	640 xx 150	32° x 26°; 0.90mr, focal 19mm, f/1.25	640 xx 280	18°x14°; 0.486mr, focal length 35mm, f/1.5
Sensor Module	FoV																				
336 xx 100	45° x 35°; 2.27mr, focal 7.5mm, f/1.25																				
336 xx 150	25° x 19°; 1.31mr, focal 13mm, f/1.25																				
336 xx 280	17° x 13°; 0.90mr, focal 19mm, f/1.25																				
336 xx 500	9° x 7°; 0.486mr, focal length 35mm, f/1.5																				
640 xx 050	90° x 69°; 2.27mr, focal 7.5mm, f/1.4																				
640 xx 080	69° x 56°; 1.89mr, focal 9mm, f/1.4																				
640 xx 100	45° x 37°; 1.31mr, focal 13mm, f/1.25																				
640 xx 150	32° x 26°; 0.90mr, focal 19mm, f/1.25																				
640 xx 280	18°x14°; 0.486mr, focal length 35mm, f/1.5																				
Operating temperature	$-40^{\circ}$ to $+65^{\circ}\text{C}$ / $40^{\circ}$ to $149^{\circ}\text{F}$ ; 5% to 95% non-condensing																				

Feature	Properties
Power consumption	CIF: 1W VGA: 1.2W
IP rating	IP67
IK rating	IK04
Material	PBT-30GF (housing); Germanium (lens)
Software (included)	Video management software MxManagementCenter

## Features ECO Thermal Image Sensor

Feature	Properties
Thermal sensitivity	Typ. 65 mK, IR range 7.8 to 14 $\mu$ m
Temperature measurement range	-40 to 330°C / -40 to 626 °F
Field of view	T040: 105 x 75°; 5,23mr, focal 2.2mm, f/1.05 T080: 56 x 42°; 3,00mr, focal 4.0mm, f/1.00
Thermal image sensor	Uncooled microbolometer, CIF: 320 x 240 pixels
Dimensions	58 x 42.5 mm (dia. 50 mm), 65g
Pixel pitch	12 $\mu$ m
Max. image size	Can be scaled up to 3072 x 2048 (6MP), automatically scaled to size of MX Sensor module
Max. frame rate	9 fps (when displaying an Mx Sensor module and a thermal sensor module, the overall frame rate of the camera is reduced to 9 fps)
Operating temperature	-40° to +65°C / 40° to 149°F; 5% to 95% non-condensing
Power consumption	600mW
IP rating	IP66
IK rating	IK04

## Technical Specifications

### MOBOTIX S74

Feature	Properties
Material	PBT-30GF (housing); Chalcogenide (lens)
Software (included)	Video management software MxManagementCenter

## Functional Modules

Functional Module	Order Code	Remark
Audio module		via IO Interface Board
Audio module	Mx-F-AUDA	Audio module with microphone and speaker
Functional MultiSense module	Mx-F-MSA	with PIR sensor, temperature sensor, illumination sensor
Functional IR Light modules	Mx-F-IRA-W	for Super Wide-Angle Lens Sensor Modules 95°
	Mx-F-IRA-S	for Standard & Wide-Angle Lens Sensor Modules 45° and 60°
	Mx-F-IRA-T	for Tele Lens Sensor Modules 15° and 30°
		Power consumption IR Light Modules: 4,2 W at 100% brightness.
White Light Modules	Mx-F-WLA-W	for Super Wide-Angle Lens Sensor Modules 95°
	Mx-F-WLA-S	for Standard & Wide-Angle Lens Sensor Modules 45° and 60°
	Mx-F-WLA-T	for Tele Lens Sensor Modules 15° and 30°
		Power consumption White Light Modules: 3,2 W at 100% brightness.

## Interface Slide in Boards

### S74 Network Slide in Board with RJ45 socket

Order Code	Mx-F-S7A-RJ45
Power Supply	PoE Plus (802.3at-2009)/Class 4
Network	RJ45 / Ethernet 1000Base-T

---

### S74 Network Slide in Board with LSA terminal

Order Code	Mx-F-S7A-LSA
Power Supply	PoE Plus (802.3at-2009)/Class 4
Network	LSA / Ethernet 1000Base-T

---

### S74 Network Slide in Board with RJ45 and VDC power supply

Order Code	Mx-F-S7A-RJ45-VDC
Power Supply	12-24 V DC only - recommended 2,5-1,5A
Network	RJ45 / Ethernet 1000Base-T

---

# Dimensions

**NOTE!** Download the drilling template from the section or on the MOBOTIX website: [www.mobotix.com](http://www.mobotix.com) > Support > Download Center > Marketing & Documentation > Drilling Templates.

**CAUTION!** Always print or copy the drilling template at 100% of the original size!

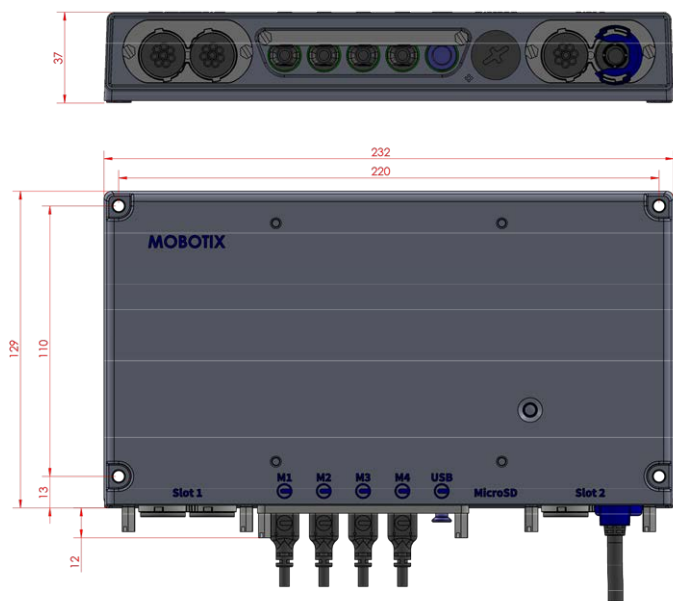


Fig. 1: MOBOTIX S74: All measurements in mm



# MOBOTIX

BeyondHumanVision

[EN\\_02/23](#)

MOBOTIX AG • Kaiserstrasse • D-67722 Langmeil • Tel.: +49 6302 9816-103 • [sales@mobotix.com](mailto:sales@mobotix.com) • [www.mobotix.com](http://www.mobotix.com)

MOBOTIX is a trademark of MOBOTIX AG registered in the European Union, the U.S.A., and in other countries. Subject to change without notice. MOBOTIX do not assume any liability for technical or editorial errors or omissions contained herein. All rights reserved. © MOBOTIX AG 2020

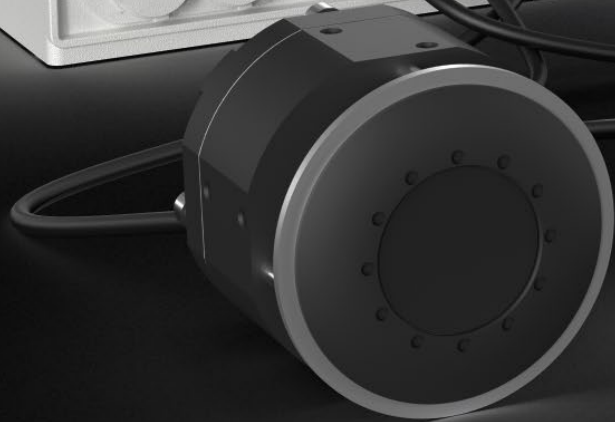


# S74 Video System

Discreet. Versatile. Outstanding.

BeyondHumanVision

MOBOTIX



# Unobtrusive. Flexible. Brilliant.

## Four adjustable modules in one camera

With up to four modules, the S74 is the most flexible MOBOTIX IoT video system ever. The concealed camera housing makes the camera discreet — only the modules are visible. With the module cables of up to three meters long, multiple directions can be captured with just one camera, one stream and one port.

The MOBOTIX S74 is designed for outstanding image quality: inside or outside, during the day or night. The video system is the next product in the open MOBOTIX 7 platform. With the intelligent camera apps, the S74 can be tailored to meet any specific need.

Be inspired by its performance, durability and reliability. Made in Germany. Made to meet high expectations.



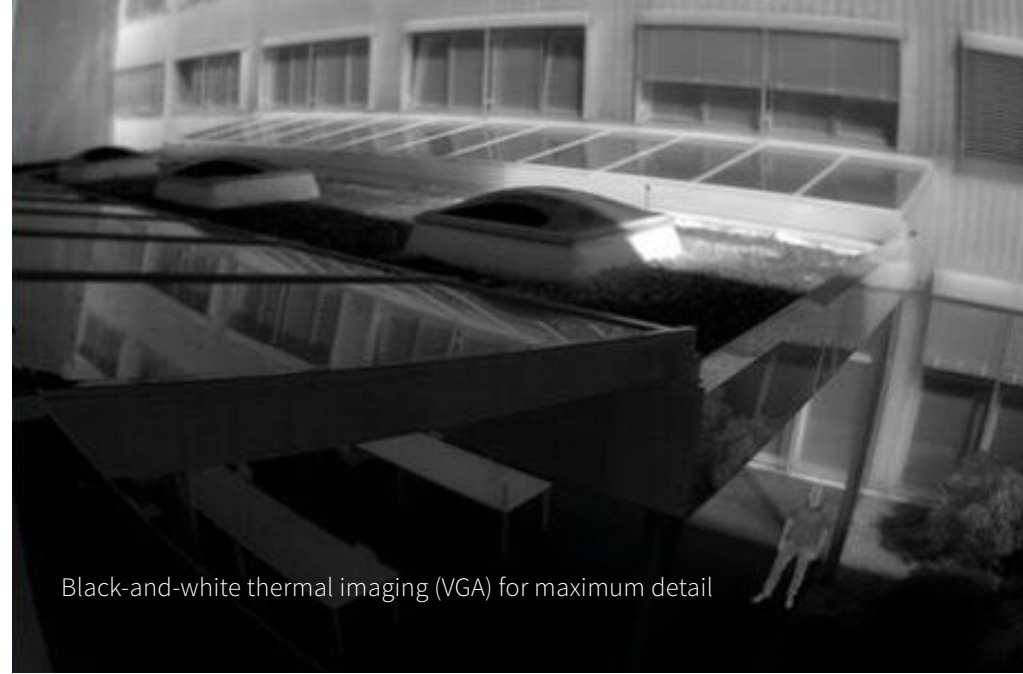
# Ultra LowLight Sensors

# Striking Image Quality

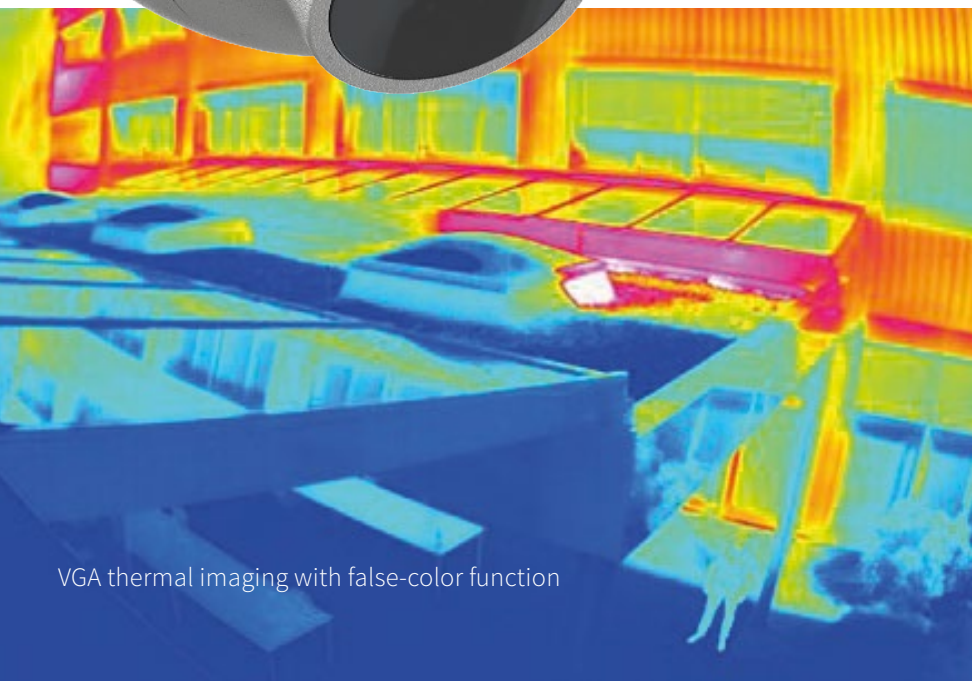
NEW: Ultra LowLight modules for unsurpassed image quality in any environment

**Configure and combine** up to four modules of the S74 to meet your exact requirements. With the new **Ultra LowLight sensor**, you can have outstanding images even with minimal light. Thanks to the shorter exposure time, LowLight technology significantly reduces motion blur in poor light conditions. Designed for two optical and two function modules at the same time with added capabilities. Installation has never been easier.

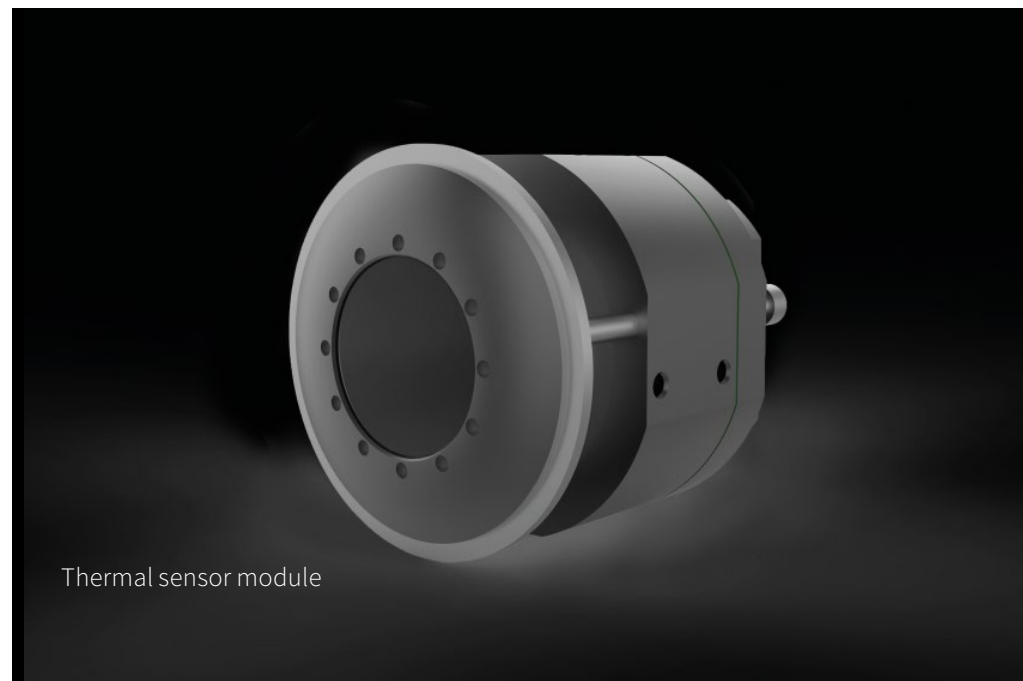
- Wide Dynamic Range function (WDR) for best image quality with backlighting or difficult lighting conditions
- Image sensors: 4K (tele/normal and wide angle), with color sensor (day), BW sensor (night) or color sensor with moving IR blocking filter (day/night)
- **Ultra LowLight 4MP sensor module for superior images with minimal light**
- MultiSense module with PIR, brightness and temperature functions (the microphone function is not available for the S74)
- IR light module (tele/normal/wide angle)
- Board for external audio devices, e.g. MOBOTIX built-in speakers



Black-and-white thermal imaging (VGA) for maximum detail



VGA thermal imaging with false-color function



Thermal sensor module

# Expanding Thermal Technology

Making the invisible, visible - this is how “Beyond**HumanVision**” works

A thermal module enables the S74 to detect the surface temperature of objects and people even in **absolute darkness and from long distances**. **Thermal technology** makes invisible heat visible.

Industrial companies, public bodies, institutions and private organisations use this for perimeter protection and fire detection, as well as improving production processes. Thermal radiometry technology is a valuable tool for health and safety concerns, it is being used for a first line alarm to identify the surface temperature of people who show an elevated temperature range and warrant further investigation for diagnosis.

- Self-installation 50 MK thermal sensor modules
- With CIF (336 x 256 px) or VGA thermal resolution (640 x 480 px)
- 17° tele to 90° wide-angle thermal lenses
- Temperature measurement in the center of the image or in the entire image area with thermal radiometry technology



The background features a central dark blue circular area from which numerous thin, multi-colored lines (red, orange, yellow, green, blue) radiate outwards, resembling fiber optic cables or data connections. These lines are interspersed with small, bright, multi-colored bokeh lights, creating a vibrant, digital atmosphere.

At a Glance  
**Quality, Performance,  
Robustness**

## Performance and Efficiency

- Max. power consumption: 25 W
- Power supply via PoE Class 4 network cable (IEEE 802.3.at)
- Internal DVR: 8-GB microSD, can be expanded

## Image Quality

- Max. image size 4K UHD: 3840 x 2160 pixels, 16:9
- **Ultra LowLight** 4MP day and night sensor modules  
(Max. image size: 2688 x 1520 pixels, 16:9, around four times greater light sensitivity than 4K UHD)
- **WDR 120 dB** for all image sensor modules
- Max. frame rate: H.264: 30fp@4K /MxPEG+: 20fps@4K

## Robustness

- Ambient temperature: -40 to 65 °C (-40 to 149 °F)
- Protection classes IP66 and IK10
- MTBF (Mean Time Between Failures): > 9 years
- Three-year warranty (option to extend to max. eight years)

## Standards and Video Formats

- ONVIF profiles S and T
- H.264 Triple Streaming
- H.265 Triple Streaming
- MxPEG + (for license-free use of the S74 in MxMC from version 2.2)
- MJPEG

DualMount



The S74 is positively chameleon-like: The eyes move completely independently of each other for the utmost **discretion and subtlety**. Fitted in the inconspicuous DualMount, two modules can be installed and oriented separately.

# Install Anywhere, Use Everywhere

Mobile and discreet due to the separation of housing and modules

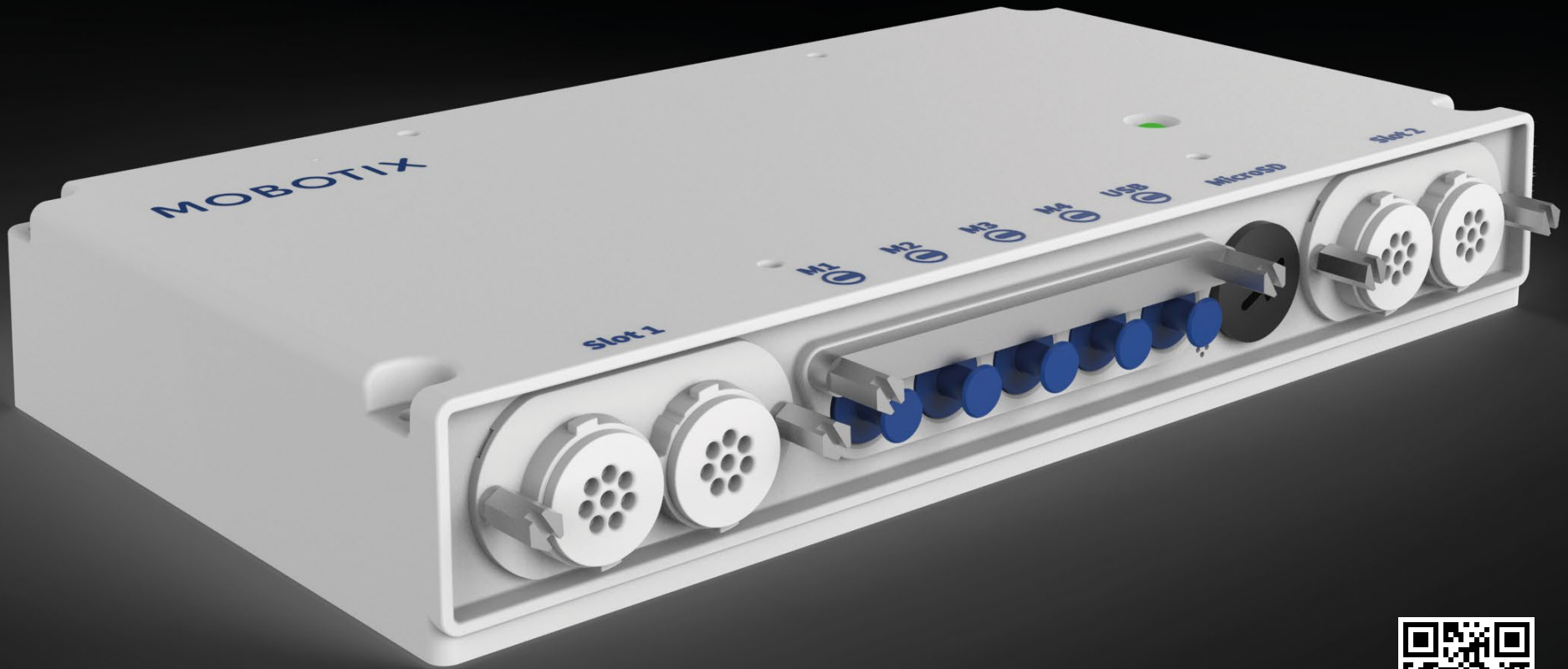
The MOBOTIX S74 itself operates **discreetly behind a wall**, equipment or ceiling covering. **Only the lenses and their brackets are mounted in the field of view.**

**Module connection cables measuring up to three meters long** give the video system flexibility. This allows two separate areas (two rooms or even around the corner) to be captured simultaneously using just one camera. Opposite lines of vision and different lanes can likewise be monitored with one camera. Accessories available in the future will further increase this range of motion.

- For indoor and outdoor use
- MonoMount for one sensor, DualMount for two sensors
- PTMount: 3 axis pan and tilt mount
- HaloMount for flush ceiling/wall mounting
- Connection cable in **1 m, 2 m and 3 m lengths**
- Plug-in connector for Ethernet (RJ45 or LSA+) and external audio
- Up to two image sensor modules that can be positioned independently of one another (max. 2x optical UDD/Ultra or 1x thermal CIF/VGA plus 1x optical UHD/Ultra)

# Acts Small - Performs Huge!

The S74 camera housing is made of high-quality, matt-white powder-coated aluminum is robust and weatherproof (IP66, IK10). Its compact dimensions of 232 x 129 x 37 mm add to its versatility.





PTMount



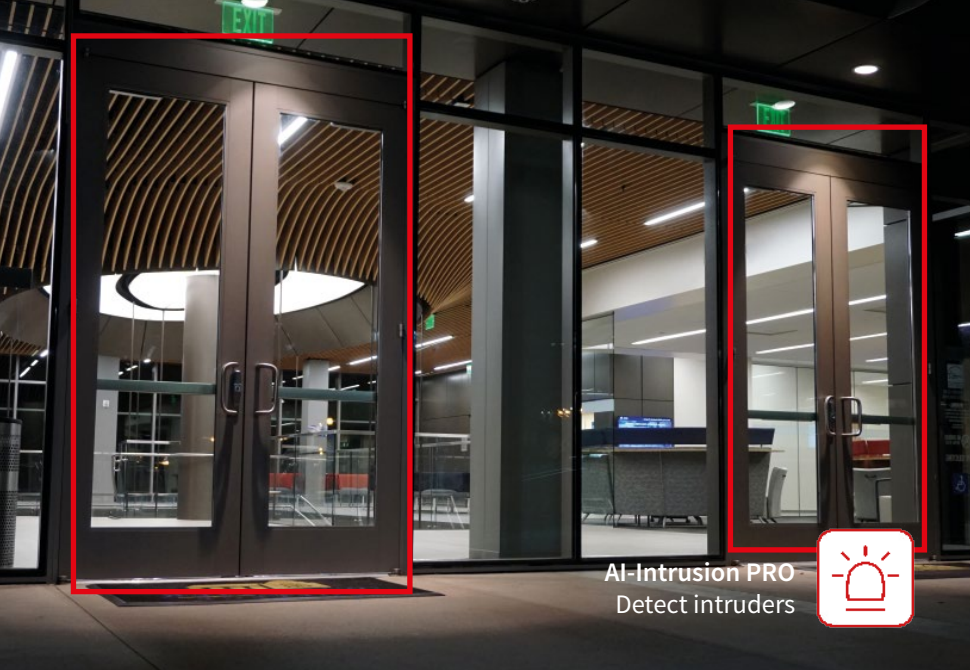
HaloMount



MultiSense



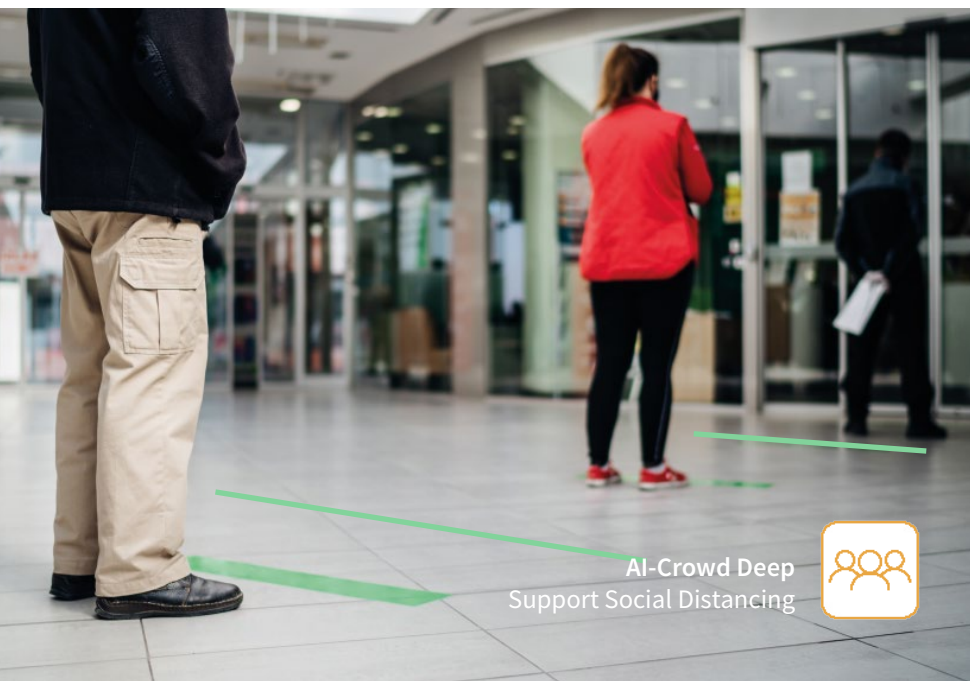
SingleMount



AI-Intrusion PRO  
Detect intruders



AI-FaceDetect-Deep  
Recognize masks



AI-Crowd Deep  
Support Social Distancing



License Plate Recognition  
Recognize number plates



# Supporting Software Packages

## The intelligent S74 camera apps of the MOBOTIX 7 platform

Modular software plug-ins make the S74 a local device with global performance. The existing MOBOTIX certified apps can be used in a broad range of applications. Many apps use artificial intelligence for this and built in deep learning algorithms.

As a partner you can also **develop your very own apps** for your specific applications. These apps can be integrated into the open MOBOTIX 7 platform using the custom app SDK (Software Development Kit). **Explore the possibilities!**

All currently available MOBOTIX certified apps can be tried **free of charge for 30 days**. The apps installed in the camera can be continuously updated with simple firmware updates.

The pre-integrated **MOBOTIX Analytics** app is cost and license-free.



You can find all apps under:  
<https://www.mobotix.com/en/mobotix-certified-apps>

**MOBOTIX**





# Valuable Video Variability

## Concrete fields of application in practice

The S74 is perfect for numerous application areas and industries. For **hotels and retailers** its unobtrusive, **educational institutions and public authorities** benefit from cost saving and return on investment. And, the use of the compact technology coupled with intelligent analytics allow for process optimization in **industrial requirements**.

The following scenarios give you a few examples of the numerous **application possibilities**:

- Parallel control of entrances and exits (e.g. with license plate recognition) using a single camera
- Monitoring of multiple lanes of traffic running in different directions (license plate recognition, traffic jams and queues)

- Securing multiple corridors and tunnels
- Corner focused perimeter protection
- Monitoring multiple coverage areas at the same time with one camera
- Discreet surveillance of stores, restaurants, hotels and spa areas
- Aesthetically non invasive
- Reliable and vandal resistant security in buses and on trains
- Monitoring industrial plants (process assurance and optimization)



High-End Video Systems  
**Made in Germany**

# Your Benefit is Our Motivation


## MOBOTIX - Uncompromisingly reliable and cyber secure

Durability, reliability and data security are core principles at MOBOTIX — and the S74 is no exception. The **ultra-robust camera** housing is made of powder-coated aluminum and the USB-C ports are waterproof. Decentralized **edge computing**: As a standalone IoT camera, the S74 transfers securely encrypted images to the network only when relevant events occur. **Cybersecurity** is the top priority, whether in a centralized, distributed or cloud based application.

The S74 video system consists of **high-performance, best of breed components** that have been made in Germany, **assembled and thoroughly tested** at our site **in Langmeil**. With the motivation that applies to all our developments: “BeyondHumanVision” — with the utmost benefit and ROI in mind.



**MOBOTIX**



EN\_11/20  
MOBOTIX AG

Kaiserstrasse  
67722 Langmeil, Germany  
Tel.: +49 6302 9816-0  
Fax: +49 6302 9816-190  
sales@mobotix.com  
www.mobotix.com

MOBOTIX is a trademark of MOBOTIX AG registered in the European Union, the U.S.A. and in other countries. Sold only to distributors or commercial clients. Subject to change without notice. MOBOTIX do not assume any liability for technical or editorial errors or omissions contained herein. All rights reserved. © MOBOTIX AG 2020

BeyondHumanVision

MOBOTIX